



# R PARK ROELAND PARK, KS

PHASE I & 2

BID RESULTS

MARCH 11, 2020

PARKS COMMITTEE MEETING

**LAMP  
RYNEARSON**

**hollis** architects®  
**millers**





## AGENDA

- **OVERVIEW OF PHASE I AND PHASE 2 COMPONENTS**
- **BID RESULTS**
- **PROJECT BUDGET BREAKDOWN**
- **BID ALTERNATES**

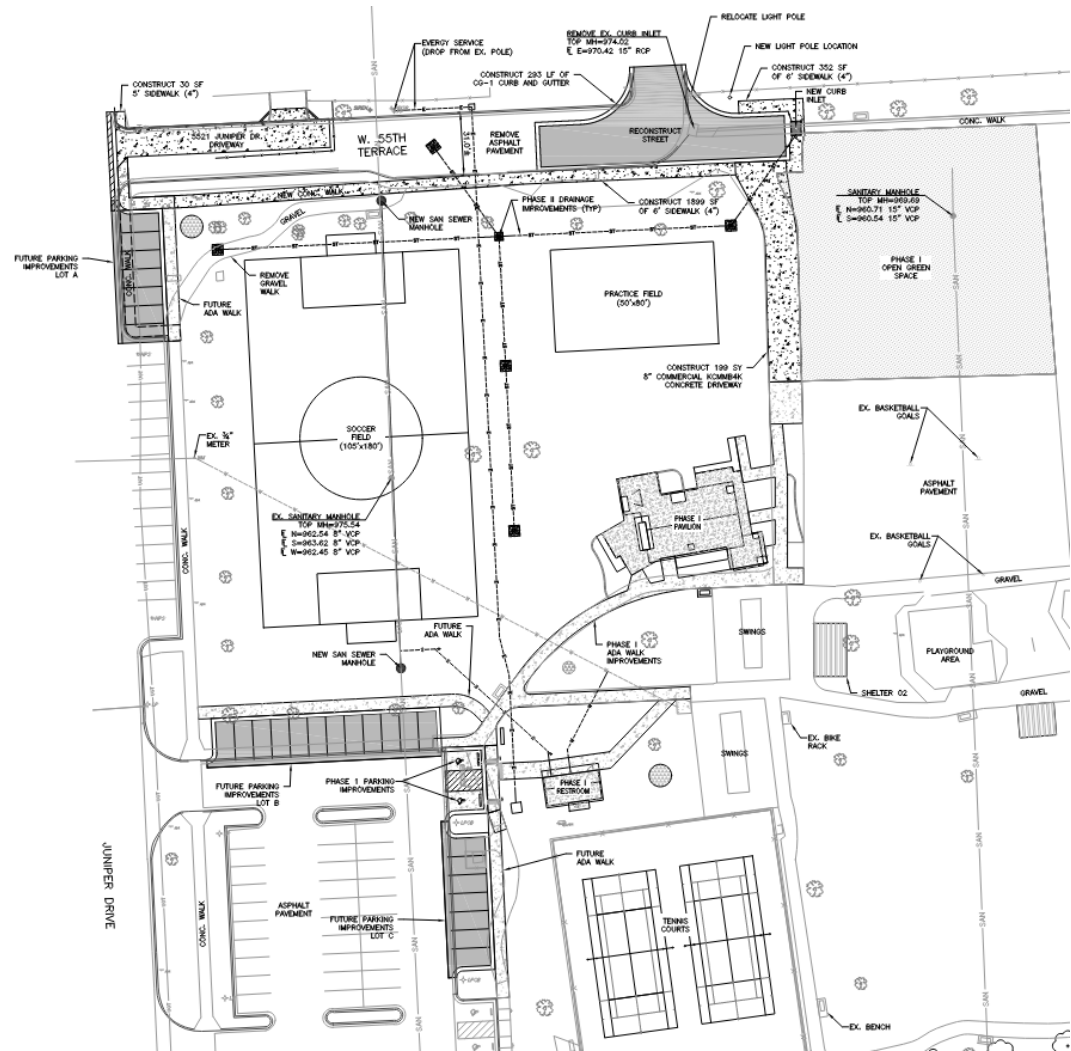
# PHASE I

- Pavilion, restrooms, and associated accessible parking
- Removal of asphalt play area to add green space
- Site utilities to support pavilion and restrooms



## PHASE 2

- Soccer field, removal of W 55<sup>th</sup> Terrace, Briar Street hammerhead, and sanitary sewer main removal and relocation
- Some grading for potential future parking spaces



## BID RESULTS

Competitive bidding with 3 of 7 as read bids below engineer's estimate

| Item                                 | Engineer's Estimate | Average Bid<br>(Excluding High) | Gunter Construction<br>Company |
|--------------------------------------|---------------------|---------------------------------|--------------------------------|
| Base Bid                             | \$1,013,981.00      | \$982,980.04                    | \$927,029.00                   |
| Alternate #1 (Fireplace)             | \$95,000.00         | \$61,647.50                     | \$39,750.00                    |
| Alternate #2 (Stone Wall w/ Pergola) | \$65,000.00         | \$68,887.83                     | \$57,850.00                    |
| Alternate #3 (Grill & Stone Island   | \$25,000.00         | \$22,760.17                     | \$22,880.00                    |
| Alternate #4 (South-East Wing)       | \$35,000.00         | \$45,704.33                     | \$37,175.00                    |
| Alternate #5 (Performance Stage)     | \$70,000.00         | \$51,800.17                     | \$46,140.00                    |

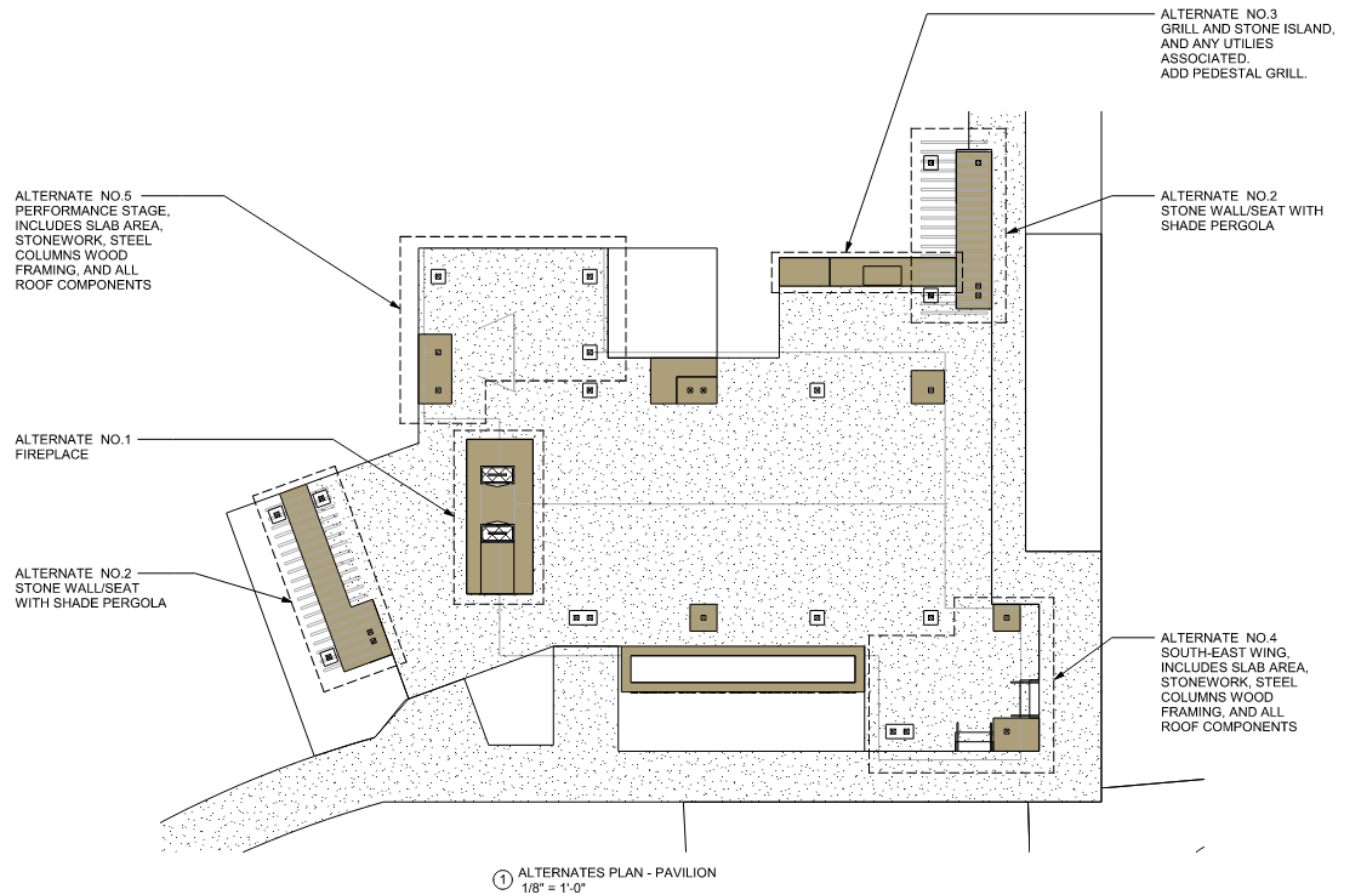
## BUDGET SUMMARY

- City Capital Improvement Plan Budget for Phase 1 and Phase 2

\$1,487,011

| Item  | Amount      |
|---|-------------|
| Consultants (Design, Construction Administration, Construction Observation, Material Testing) | \$219,161   |
| Utilities (Every and Water Service modifications)   | \$36,500    |
| City Directed Change Orders and Publications  | \$30,500    |
| Subtotal  | \$286,161   |
| Remaining Balance for Construction / Furniture & Fixtures                                     | \$1,200,850 |
| Construction Base Bid   | \$927,029   |
| Alternate #1 (Fireplace)  | \$39,750    |
| Alternate #2 (Stone Wall w/ Pergola)  | \$57,850    |
| Alternate #3 (Grill & Stone Island)   | \$22,880    |
| Alternate #4 (South-East Wing)  | \$37,175    |
| Alternate #5 (Performance Stage)  | \$46,140    |
| Subtotal  | \$1,130,824 |
| Remaining Balance for Furniture & Fixtures  | \$70,026    |

| Alternates                              | Amount   |
|---|----------|
| Alternate #1<br>(Fireplace)             | \$39,750 |
| Alternate #2<br>(Stone Wall w/ Pergola) | \$57,850 |
| Alternate #3<br>(Grill & Stone Island)  | \$22,880 |
| Alternate #4<br>(South-East Wing)       | \$37,175 |
| Alternate #5<br>(Performance Stage)     | \$46,140 |



Need recommendation of alternatives to include for consideration by City Council