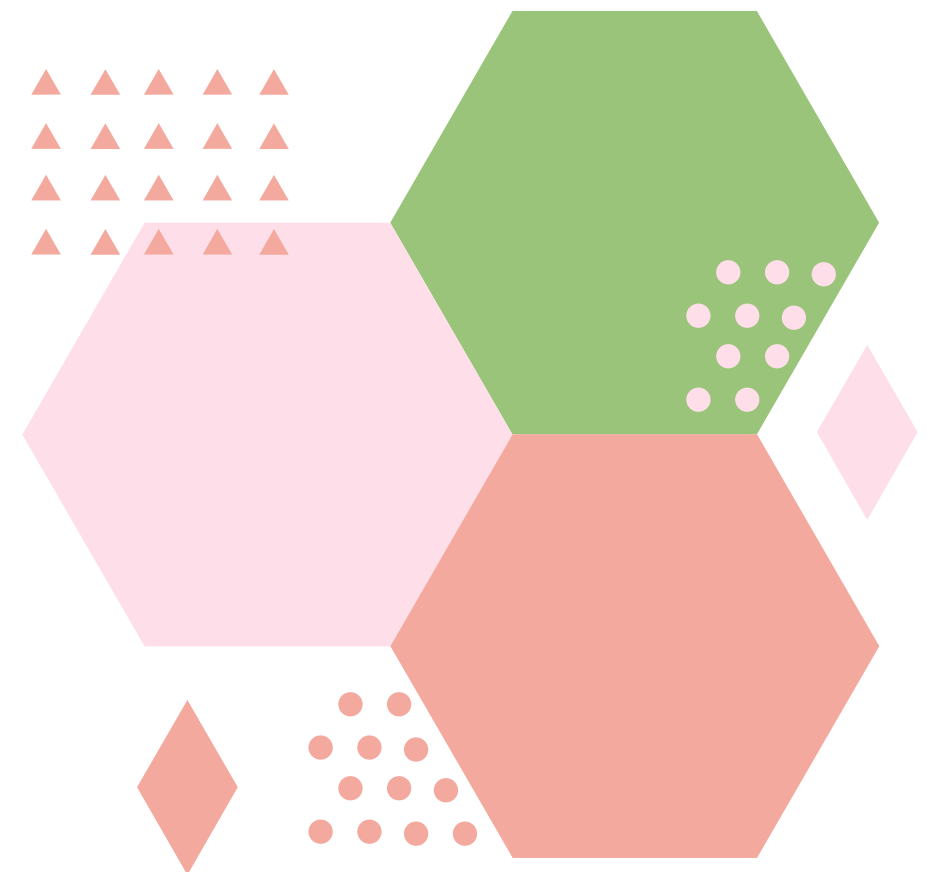


CURBSIDE GLASS RECYCLING

PILOT RESULTS AND OPTIONS



RIPPLE GLASS PILOT PROGRAM

THE BASICS

- 6 month pilot program (Oct 2021 – March 2022)
- 654 eligible households, 66% participation rate
- Bi-monthly curbside collection
- City-funded (\$2.50 per account per month, \$9,000 total)



THE RESULTS

Roeland Park Curbside Pilot	5-Oct	19-Oct	2-Nov	16-Nov	7-Dec	21-Dec	4-Jan	18-Jan	1-Feb	15-Feb	1-Mar	15-Mar	TOTAL
Set-Outs	213	161	118	153	131	96	132	135	153	125	146	137	1700
Set-Out %	33%	25%	18%	23%	20%	15%	20%	21%	23%	19%	22%	21%	21.66%
Tons	1.53	0.97	0.66	0.94	0.85	0.72	1.02	0.91	1.07	0.8	1	0.75	11.22
Avg. Lbs/Set-Out	14.37	12.05	11.19	12.29	12.98	15.00	15.45	13.48	13.99	12.80	13.70	10.95	13.19
Avg. Lbs/Participating House	4.68	2.97	2.02	2.87	2.60	2.20	3.12	2.78	3.27	2.45	3.06	2.29	2.86

OPTIONS



CITY-WIDE CURBSIDE GLASS RECYCLING, PAID FOR BY THE CITY

- Seek proposals from local companies
- Add cost to FY 2023 General Fund Budget



CITY-WIDE CURBSIDE GLASS RECYLING, PAID FOR BY RESIDENTS

- Seek proposals from local companies
- Add cost to FY 2023 Solid Waste Assessment



REIMBURSE RESIDENTS FOR OPT-IN CURBSIDE GLASS RECYCLING SERVICES

- Develop program guidelines to reimburse for some or all of resident annual cost



STATUS QUO

- Residents opt-in for curbside subscription.

FISCAL AND ENVIRONMENTAL IMPACTS OF OPTIONS

Assumptions and Context:

- The analysis assumes monthly pick-up.
- Collection area of 2,851 households (identical to Solid Waste Assessment)
- For City-provided service, a monthly cost of \$2.25 is used for comparison. This cost could change based on the results of RFP.
- For resident opt-in service, a monthly cost of \$10 (average cost of available curbside services) is used.
- A participation rate of 42% is used to estimate cost for Option 3a and Option 3b. This is double the average participation % in the pilot, which accounted for bi-monthly pick up.
- The Avg Lbs of Waste Diverted Annually estimate is consistent across all options; assumes 42% of the average lbs per pickup reported in the pilot data (consistent with participation % used).

FISCAL AND ENVIRONMENTAL IMPACTS OF OPTIONS

Assumptions and Context con't:

- According to the 2020 State of Curbside Recycling Report put out by the Recycling Partnership organization, approximately **30%** of single family homes participate in curbside recycling nationwide and 21% of solid waste collected annually nationwide is recyclable glass.
- According to GFL (our solid waste provider), it is estimated that Roeland Park households have a curbside recycling participation rate of **92%**.
- It is estimated that the average Roeland Park household sets out 491.3 lbs of recycling annually and 1,335 lbs of municipal solid waste annually. This roughly equals 1,400,696 lbs of recycling and 3,806,085 lbs of solid waste City-wide.
- The estimated lbs of glass waste diverted annually with curbside glass recycling equals 14% of the total lbs of waste diverted annually in Roeland Park.

FISCAL AND ENVIRONMENTAL IMPACTS OF OPTIONS

	Annual Cost to City	Annual Cost to Residents	Estimated Lbs of Glass Waste Diverted Annually
Option 1: City-wide, City provided curbside recycling	\$ 77,004	\$ -	195,693
Option 2: City-wide, resident paid curbside recycling	\$ -	\$ 27	195,693
Option 3a: Resident opt-in subsidized recycling, 50% reimbursed	\$ 71,870	\$ 60	195,693
Option 3b: Resident opt-in subsidized recycling, 100% reimbursed	\$ 143,741	\$ -	195,693
Option 4: Resident opt-in recycling, no subsidy	\$ -	\$ 120	195,693

ADDITIONAL IMPACTS TO CONSIDER

- If Council were to choose to cover the cost out of the General Fund this would reduce the amount available for capital projects funding by \$77k each year.
- This cost is equal to .7 mill.
- A 92% participation rate in curbside glass recycling would divert approximately 830,312 lbs of glass per year.

CITIZEN INPUT

The 2021 Citizen Survey asked broadly which sustainable practices are difficult to practice in Roeland Park; the top responses were using public or alternative means of transportation, recycling glass (non-curbside recycling), and buying local products.

A specific question regarding resident-paid curbside glass recycling was also asked:

Q26. Please rate your level of support for each of the following. [10. The City offering curbside glass recycling services- each household would be assessed approximately \$3.50 per month regardless of their participation in the program]	
Answer	Percentage
Very Supportive (04)	34.1%
Supportive (03)	16.3%
Not Sure (02)	15.7%
Not Supportive (01)	33.9%

KEY CONSIDERATIONS



COST EFFICIENCY

The City serving as a sole contractor for the curbside glass recycling service (options 1 and 2) offers a significant cost savings.



SPLIT PUBLIC OPINION

The results of the 2021 Citizen Survey show an almost even split between Strongly Support and Strongly Oppose a City-wide, resident-paid curbside program.



ROELAND PARKERS RECYCLE

Roeland Park residents participate in curbside recycling at nearly 3 times the national average.



THE DATA IS IMPERFECT

City-wide data is not aggregated by material. It's hard to determine if participation would increase if enrollment was mandatory.

OPTIONS



CITY-WIDE CURBSIDE GLASS RECYCLING, PAID FOR BY THE CITY

- Seek proposals from local companies
- Add cost to FY 2023 General Fund Budget



CITY-WIDE CURBSIDE GLASS RECYCLING, PAID FOR BY RESIDENTS

- Seek proposals from local companies
- Add cost to FY 2023 Solid Waste Assessment



REIMBURSE RESIDENTS FOR OPT-IN CURBSIDE GLASS RECYCLING SERVICES

- Develop program guidelines to reimburse for some or all of resident annual cost



STATUS QUO

- Residents continue to utilize drop-off bin or curbside subscription.

The image features a solid green background with two large, semi-transparent, light green circles. One circle is on the left side, and the other is on the right side, both partially cut off by the edges of the frame. In the center, the word "QUESTIONS?" is written in a bold, white, sans-serif font.

QUESTIONS?