

Community Center Phase I Improvements  
City of Roeland Park, Kansas  
August 22, 2022

# Roeland Park Community Center



# Project Phasing

---

## Phase I

- Improvements and upgrades/replacements of select interior finishes and lighting in the following spaces:
  - Public corridors and restrooms
  - Room 6
  - Room 2
  - Room 3
  - Art Room
  - Multipurpose Room (new paint and ceiling tiles)
  - Neighbor's Place (new paint)
- Bid alternates to be included:
  - *Alternate 1: Existing Stone Improvements / clean, paint or stain*
  - *Alternate 2: Existing Brick Improvements / clean, paint or stain*
  - *Alternate 3: Existing EIFS Improvements / recoat*
  - *Alternate 4: Add patio space south of Room 6 – including a monumental sign, and sliding door*
  - *Alternate 5: Replace flooring, wall base and ceiling tiles in Multipurpose Room*
  - *Alternate 6: Replace interior doors and frames as indicated on the door schedule. Door hardware to be included*

## Phase II

- Include any bid alternates from Phase I that were not completed
- Improvements and upgrades/replacements of select interior finishes and lighting in the following spaces:
  - Child Development
  - Fitness Center
- Bid alternates for improvements in the offices, reception and counseling spaces

# Schedule

---

- **100% CD Deliverable** | August 5, 2022
- **Issue for Bid & Ad** | September 6, 2022
- **Prebid Opening** | September 21, 2022 at 10am, Roeland Park CC
- **Bid Opening** | October 6, 2022 at 2pm, Roeland Park City Hall
- **Award** | October 17, 2022

# Interior Material Board

- Updated Ceilings
  - Wood at Entry
  - ACT
- Fresh Paint on Walls
- New Flooring
  - Carpet
  - LVT
- New Lighting
- Wayfinding / Signage



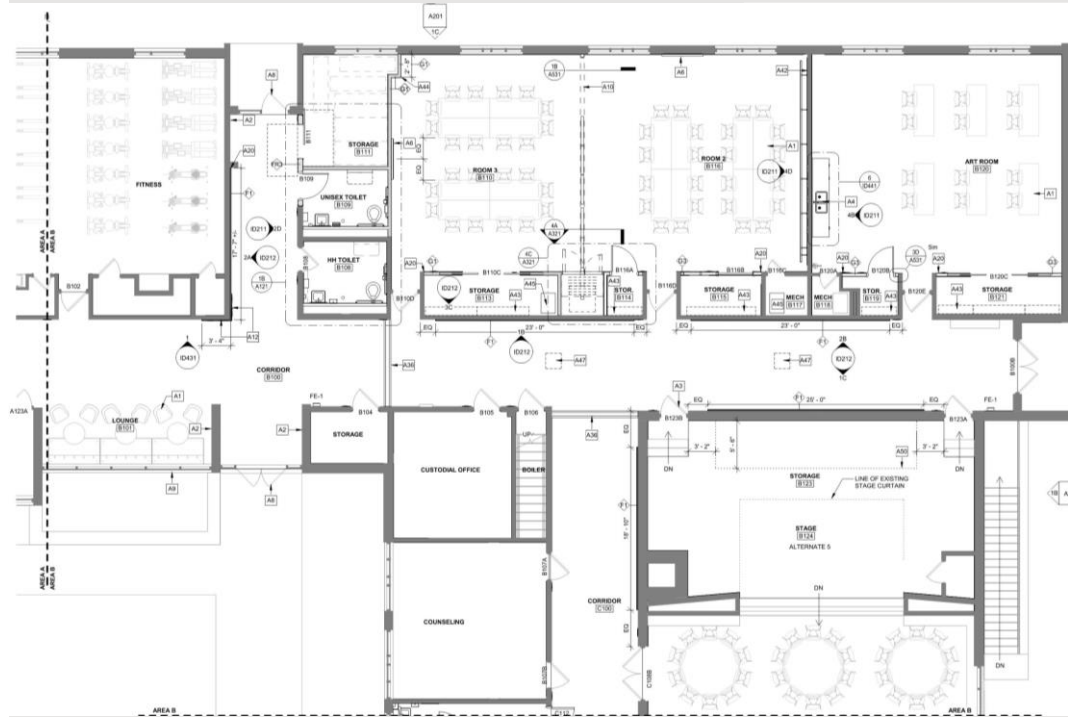
# Overall Floor Plan

- Phase I Improvements will include interior finish upgrades to the following spaces
  - Public corridors
  - Restrooms
  - Room 6
  - Room 2
  - Room 3
  - Art Room
  - Multipurpose room
  - Neighbor's Place

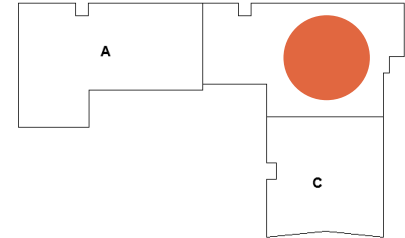


The diagram shows a house layout with three rooms: A, B, and C. Room A is on the left and contains a red circle. Room B is on the top right, and Room C is on the bottom right. The rooms are connected by a central hallway.

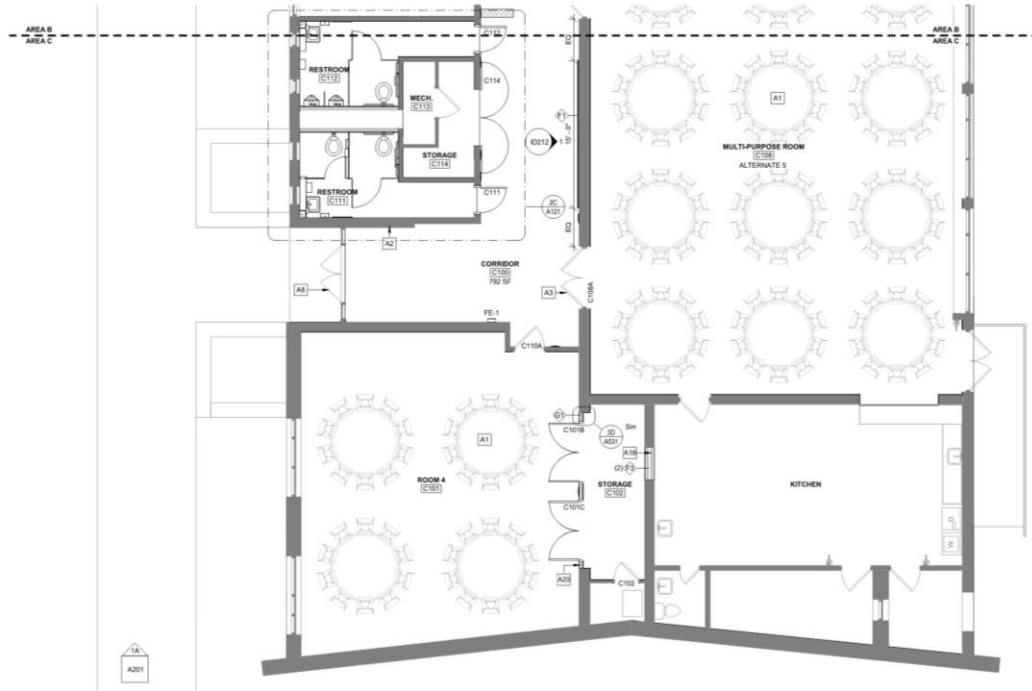
# Floor Plan – Area B



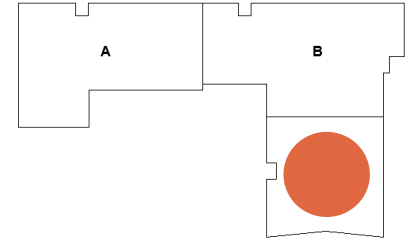
KEY PLAN



# Floor Plan – Area C

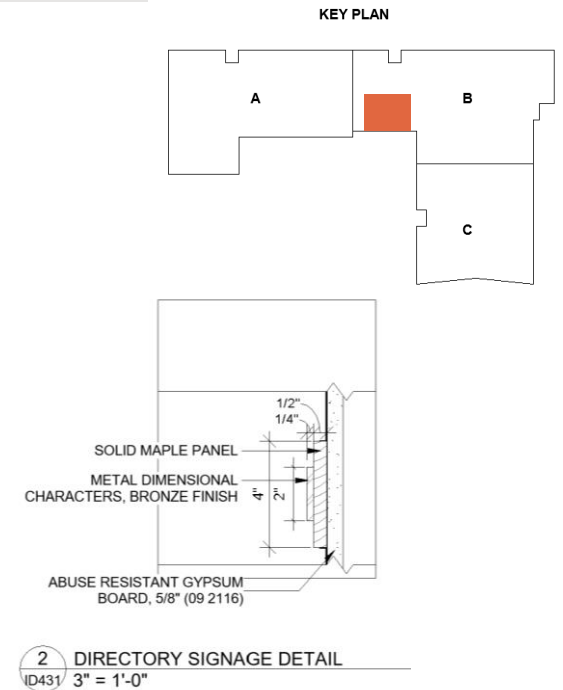
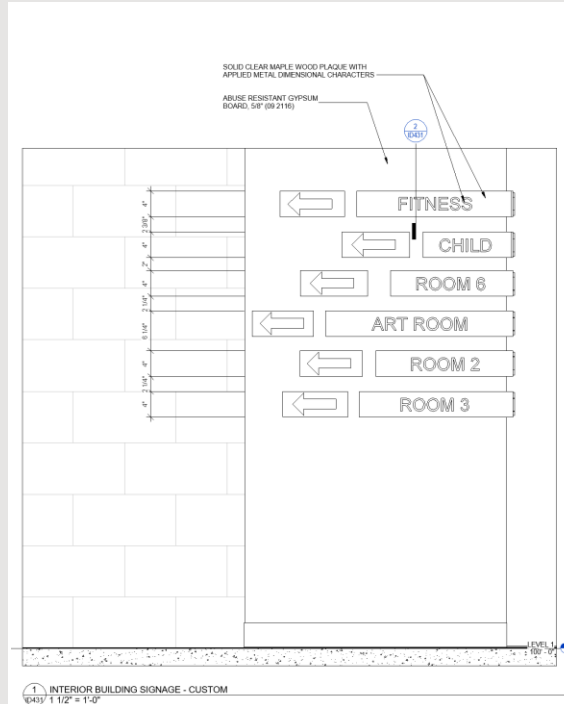


KEY PLAN

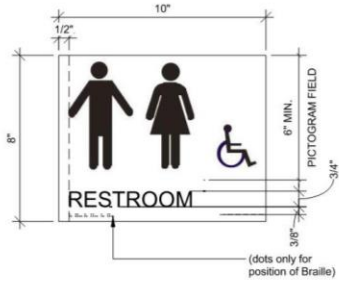




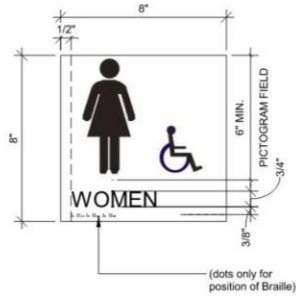
# Interior Building Sign



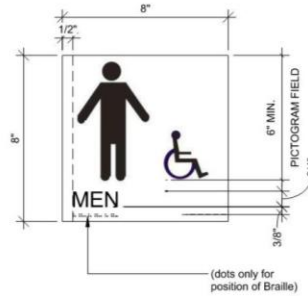
# Interior Room Signs



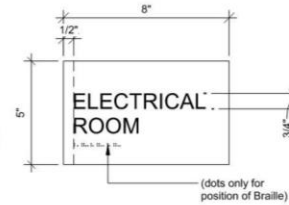
SIGN TYPE 1



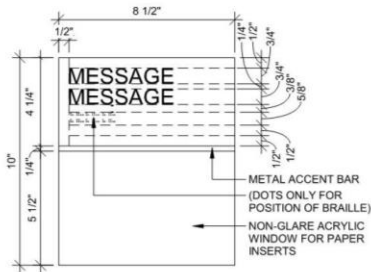
SIGN TYPE 2



SIGN TYPE 3

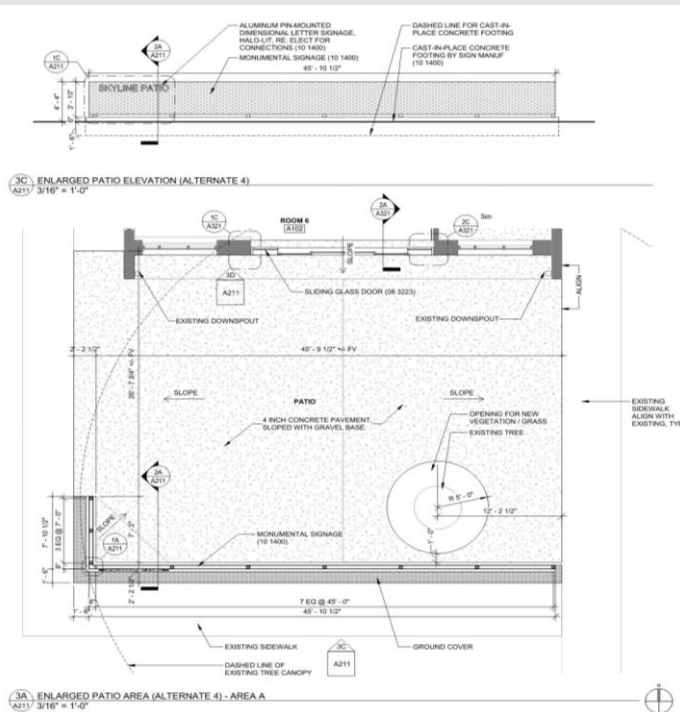


SIGN TYPE 4

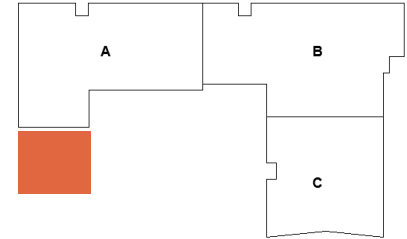


SIGN TYPE 5

# Exterior Building Sign (Alternate 4)



KEY PLAN



## Exterior Improvements / Existing





# Exterior Improvements / Option 1



- Existing Stone
  - Stain to match Sherwin-Williams Snowbound
  - Add a partial stain to complement Snowbound as an accent
- Existing Brick
  - Stain to match Sherwin-Williams Iron Ore
  - Add a partial stain to complement Iron Ore as an accent
- Existing EIFS
  - Recoat to match Sherwin-Williams Snowbound as indicated
  - Recoat to match Sherwin-Williams Iron Ore as indicated
- Existing Trim
  - Repaint with Sherwin-Williams Iron Ore



# Exterior Improvements / Option 2



- Existing Stone
  - Stain to match Sherwin-Williams Iron Ore
  - Add a partial stain to complement Iron Ore as an accent
- Existing Brick
  - Stain to match Sherwin-Williams Snowbound
  - Add a partial stain to complement Snowbound as an accent
- Existing EIFS
  - Recoat to match Sherwin-Williams Snowbound
- Existing Trim
  - Repaint with Sherwin-Williams Iron Ore



# Exterior Improvements / Option 3



- Existing Stone
  - No Change
- Existing Brick
  - No Change
- Existing EIFS
  - Recoat to match trim, Sherwin-Williams Iron Ore
- Existing Trim
  - Repaint with Sherwin-Williams Iron Ore



---

Questions?



